



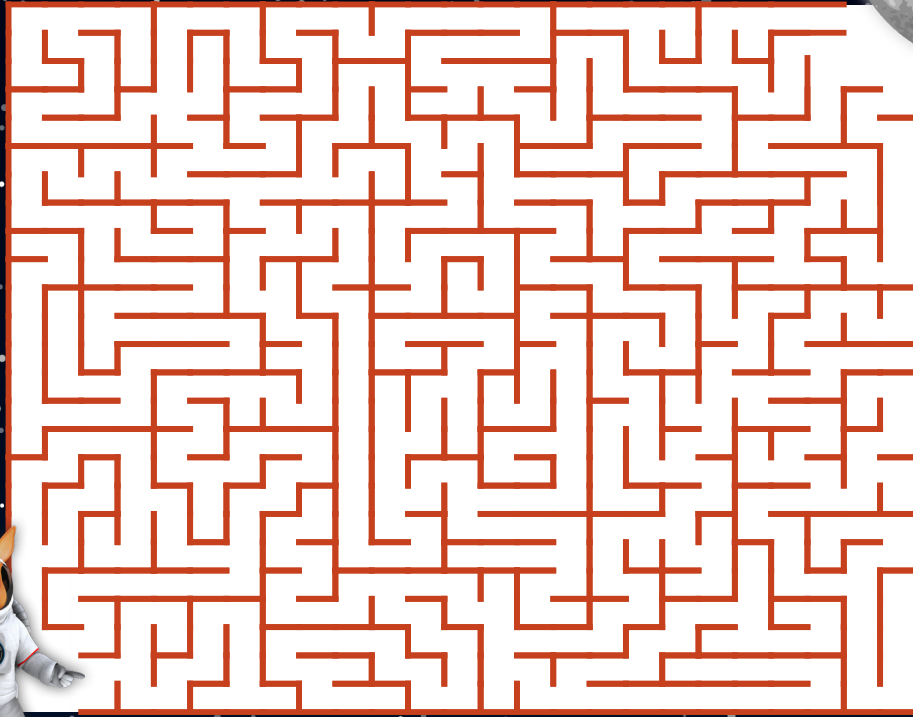
Australian
Space Agency

Purra's
SPACE
ACTIVITY
BOOK



CAN YOU HELP PURRA GET TO THE MOON?

YOUR COLOURING IN PAGE



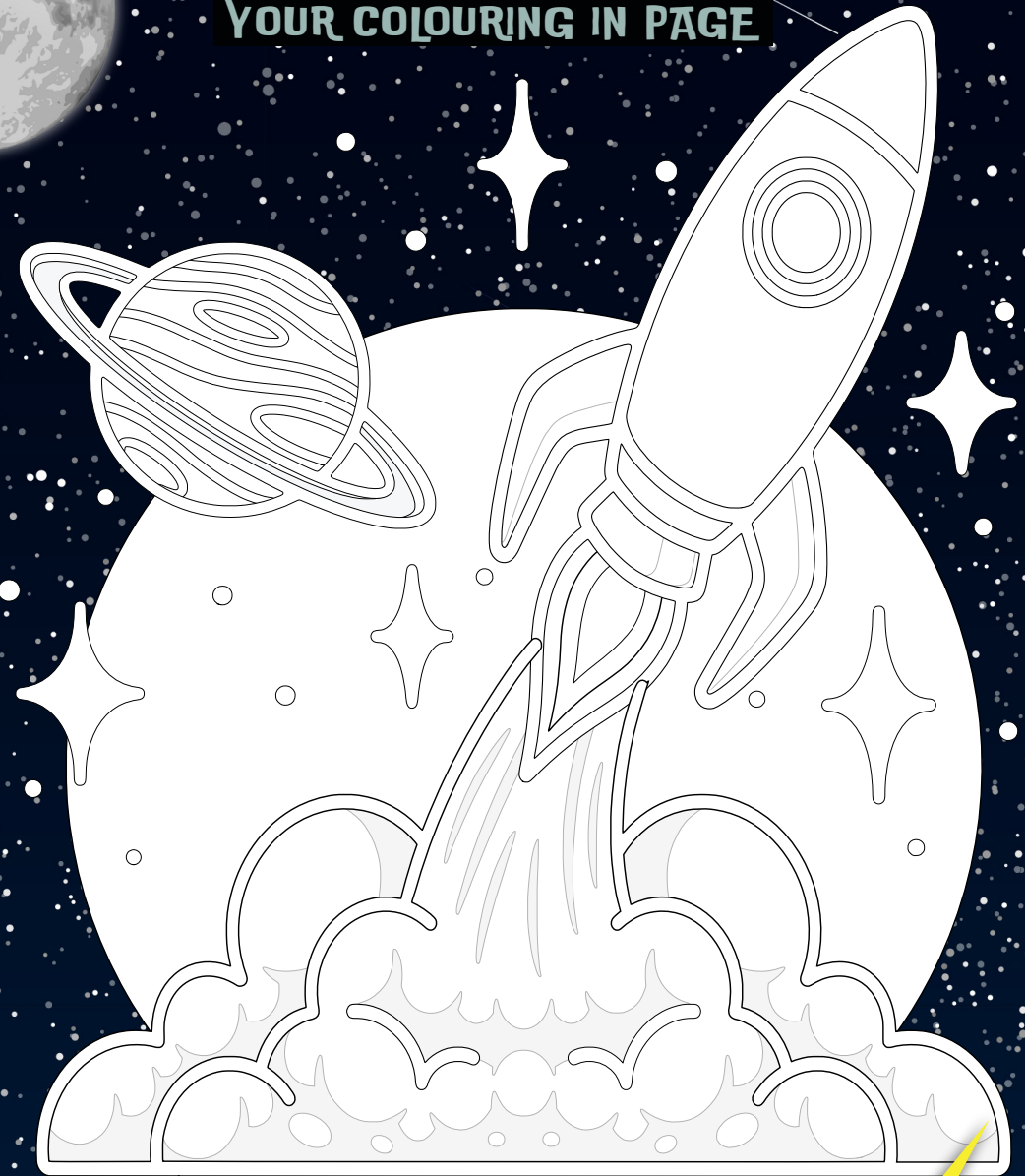
Purra's SPACE QUIZ ???



How much do you know about space?

Circle your answer and see how many you get right.

- 1** How far is the Moon from Earth?
 - A. 300,500 kms
 - B. 384,400 kms
 - C. 450,000 kms
- 2** What keeps satellites in orbit?
 - A. Clouds
 - B. The Force
 - C. Gravity
- 3** How many rovers have explored Mars?
 - A. 6
 - B. 2
 - C. 4
- 4** Who was the first animal to orbit the Earth?
 - A. Felicette, the cat
 - B. Enos, the chimpanzee
 - C. Laika, the dog



SPACE



SHOPPING

Your online orders and deliveries are made possible with help from satellites



INTERNET

Satellites provide WiFi in the sky - for phones, tablets and laptops



GROWING FOOD

From farm to table - satellites help our farmers manage their plants and animals



SPACE IS PART OF EVERYDAY LIFE

Why does
SPACE 
matter 

DIRECTIONS

Find the quickest way to the shops or your best friend's house with GPS



LIVE TV

Communication satellites deliver your favourite TV shows and sports

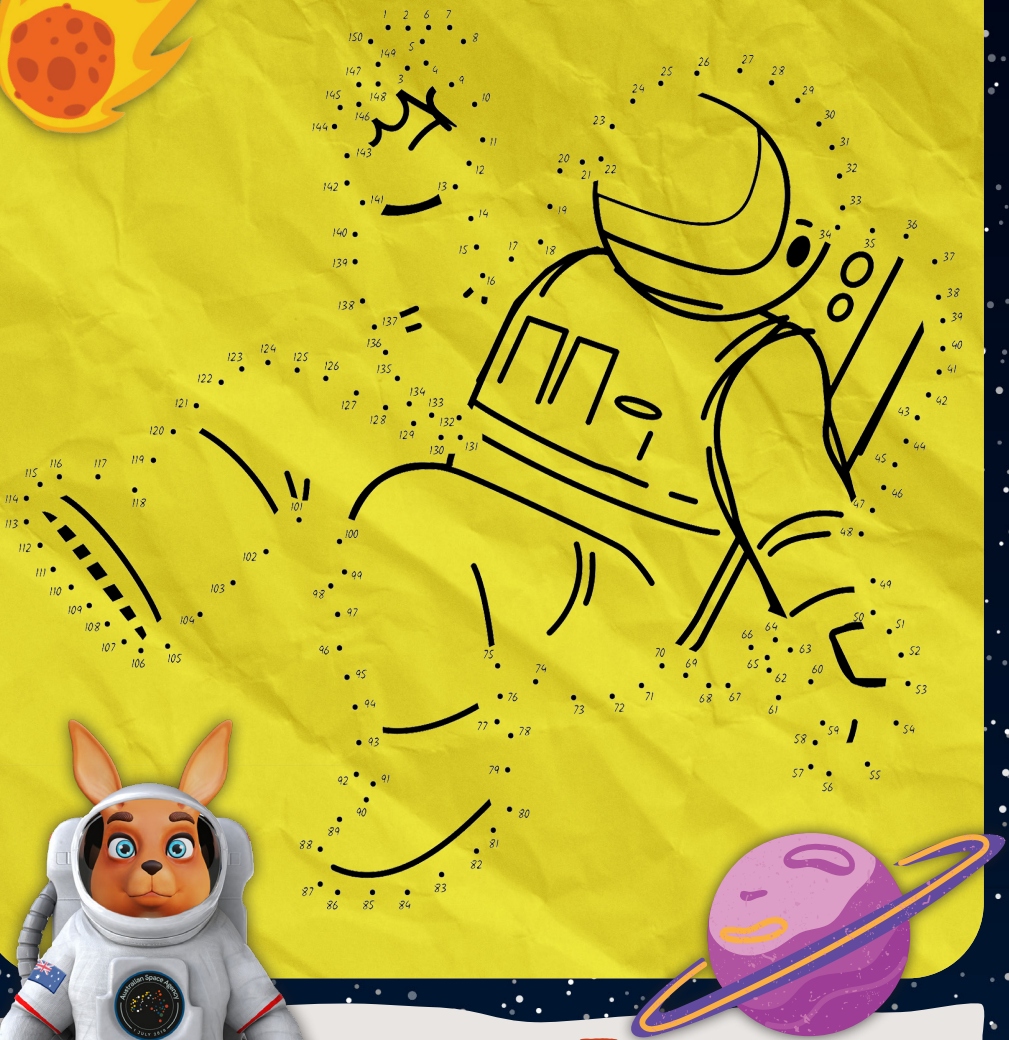


WEATHER

Weather satellites help us to be ready for rain, hail or shine



DOT TO DOT



WHO IS Purra



Purra is an Australian Space Agency 'kanganaut' named after an Indigenous astronomy story, which can be visualised in the stars across the night skies in the Southern Hemisphere.

The Boorong people tell the story of two hunters, Wanjel and Yuree, who pursue the kangaroo Purra.

WORD SEARCH



Circle all the words so you can write the hidden message here

E P O C S E L E T S P A E S P I L C E C
 D G A L A X Y D I O R E T S A O R B I T
 I E N O I T A L L E T S N O C E I C S T
 S S P A C E S H I P S A R R U P O L T I
 C R N O O M H M I L K Y W A Y U E A E U
 O E C S F T U A N A G N A K N R T U N S
 V V O O R N E B U L A R E T O E S N A E
 E I M A Y T I V A R G V D L M T E C L C
 R N E T I L L E T A S O P L A R Y H P A
 Y U T O M U U C A V W X E R O C K E T P
 N S R E T A R C E N E H S M E T E O R S

- | | | |
|---------------|-----------|------------|
| ASTEROID | GRAVITY | PURRA |
| COMET | HELMET | ROCKET |
| CONSTELLATION | KANGANAUT | SATELLITE |
| COUNTDOWN | LAUNCH | SPACESHIPS |
| CRATER | METEOR | SPACESUIT |
| DISCOVERY | MILKY WAY | STARS |
| EARTH | MOON | SUN |
| ECLIPSE | NEBULA | TELESCOPE |
| EXPLORE | ORBIT | UNIVERSE |
| GALAXY | PLANETS | VACUUM |

Answers to Purra's Space Quiz:

B 384,400 kms C Gravity A 6 C Laika, the dog



Australian Space Discovery Centre

- 🔍 A space to |
- 🔍 A space to **discover**
- 🔍 A space to **connect**
- 🔍 A space to **inspire**
- 🔍 A space to **learn**
- 🔍 A space to **play**
- 🔍 A space to **dream**



PLAN YOUR VISIT
discover.space.gov.au



Australian Government



Australian
Space Agency